



ELVIAL FD77

When making an insulated folding door we had to strike the perfect balance; respect the requirements of extra large openings by creating an extended variety of solutions that combine deft design with indisputable quality in all the functional elements. The result is a solid and handsome system that will run smoothly for years to come.



ELVIAL FD77

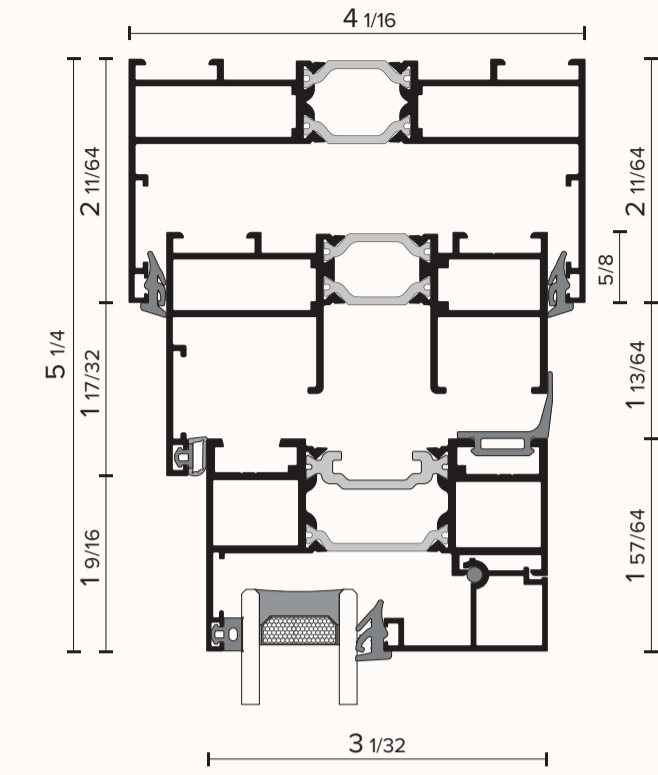
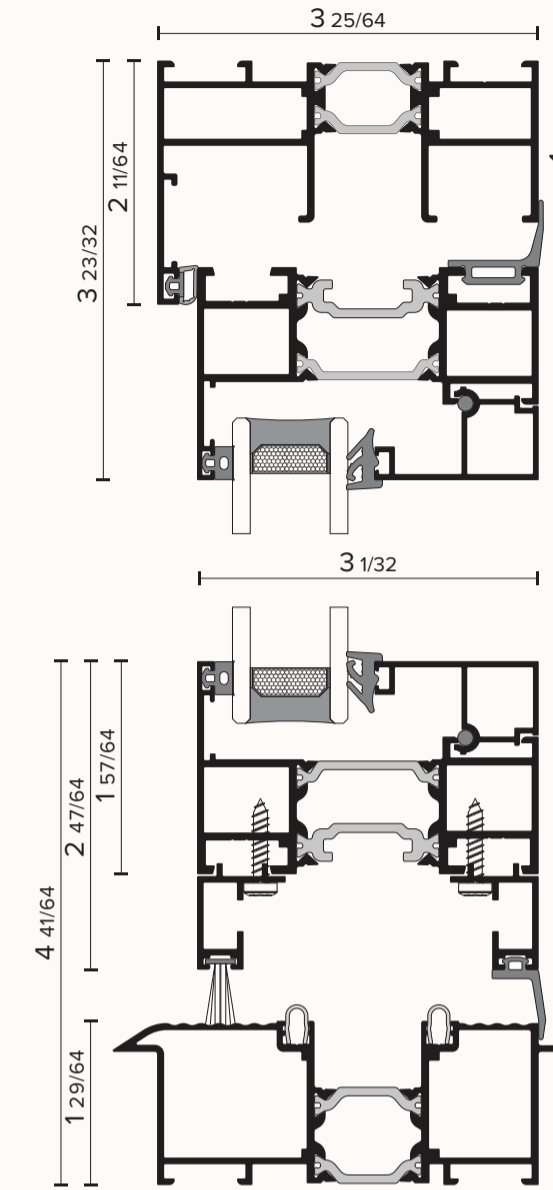
The Identity

DESIGN

System Depth		3 1/32 in
Min Face Height	Frame - Sash	3 23/32 in
Min Face Height	Threshold - Sash	3 21/64 in
Min Face Width	Middle Mullion	4 1/4 in

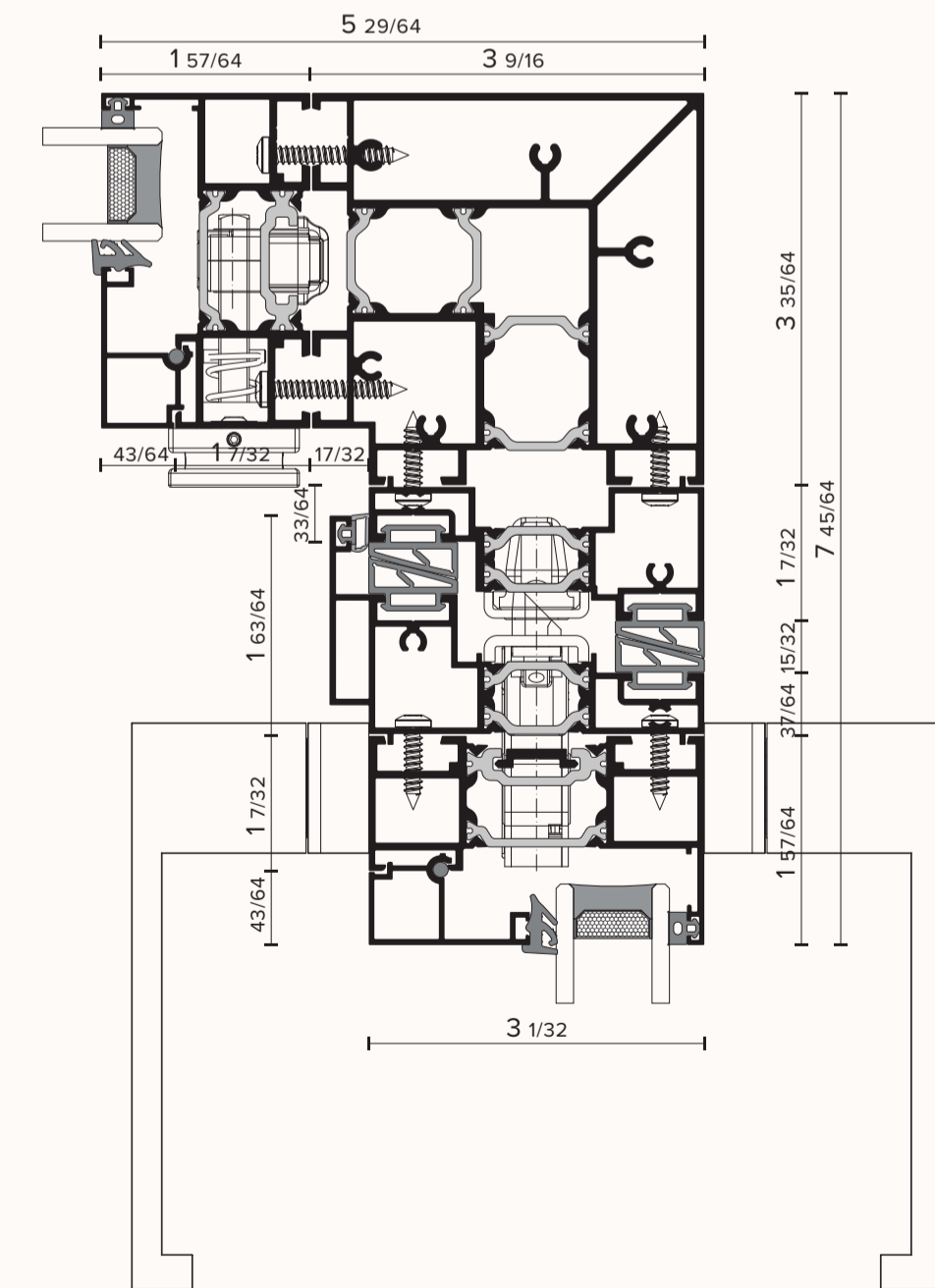
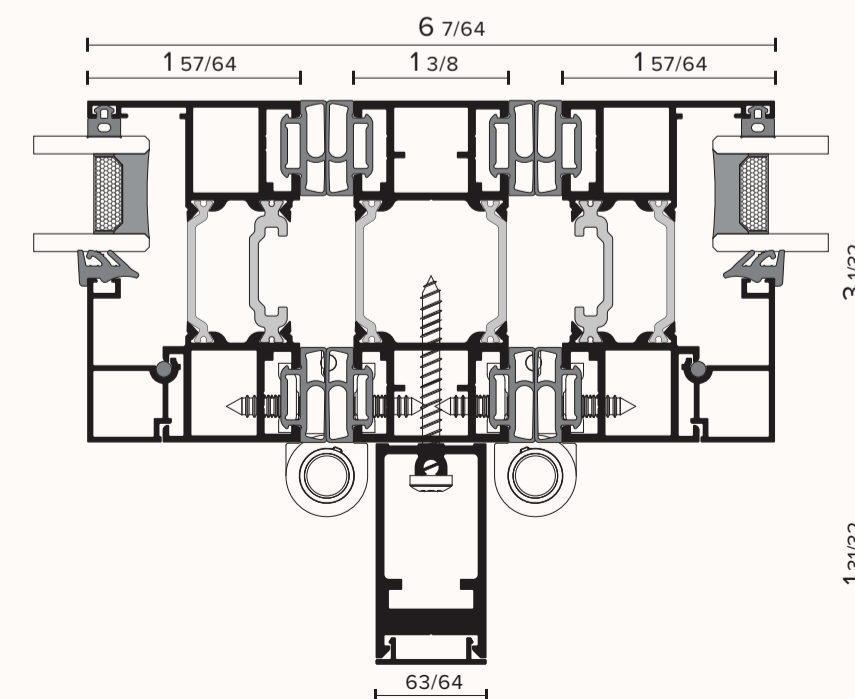
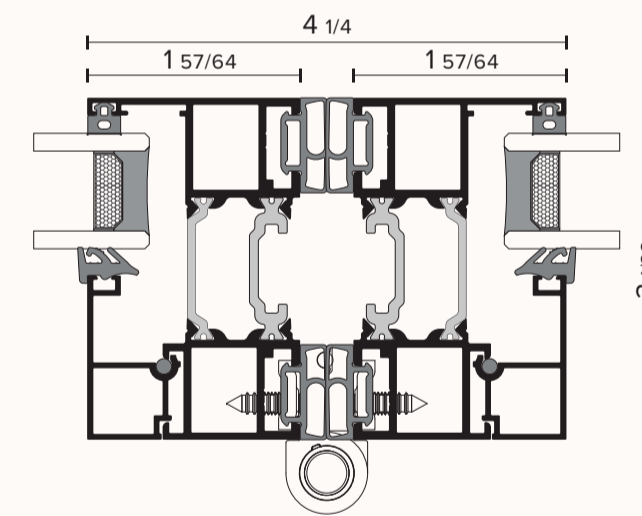
PROPERTIES

Max Sash Height		137 51/64 in
Max Sash Width		62 63/64 in
Max Sash Weight		507.1 lbs
Max Glass thickness		2 3/64 in



The Performance

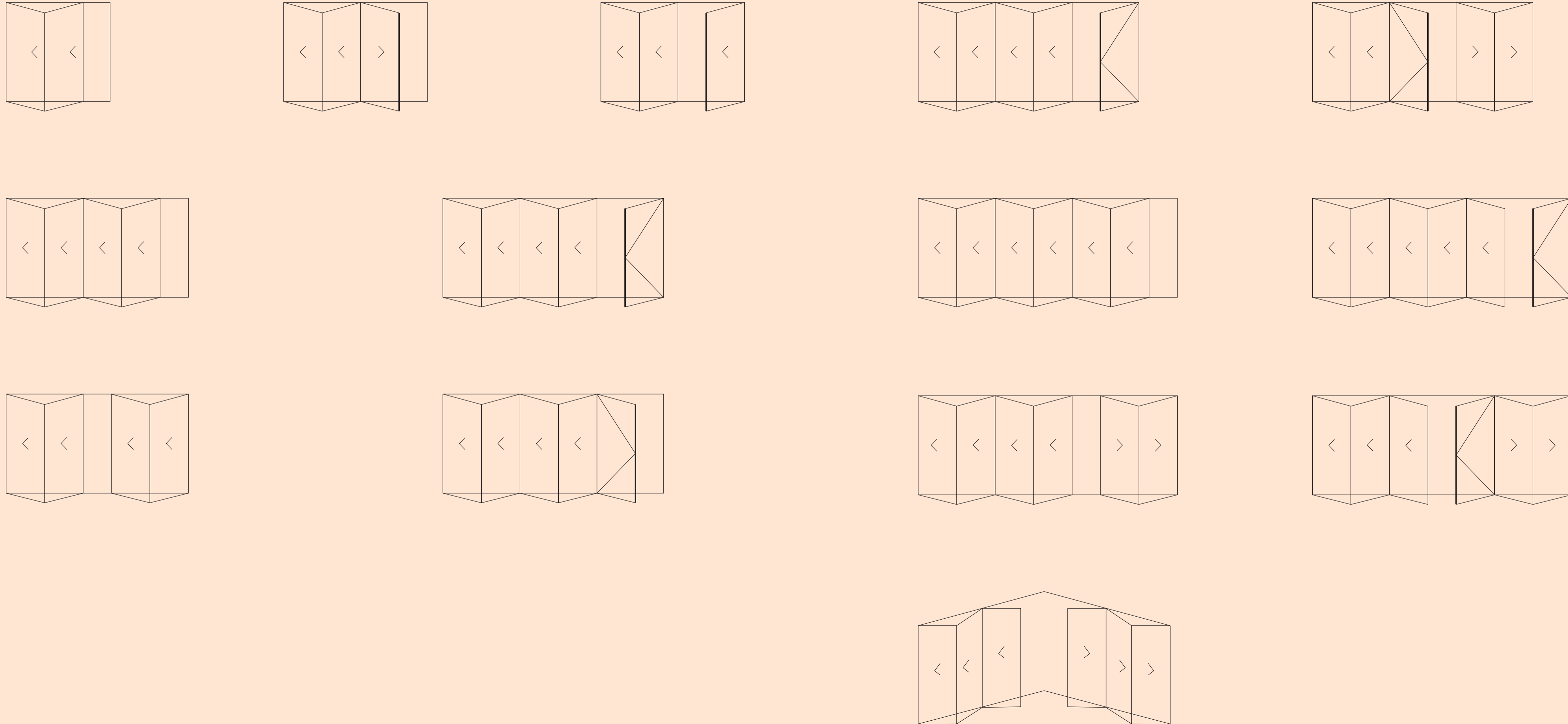
CHARACTERISTIC	STANDARD	VALUE
ENERGY		
Thermal Insulation Uf	EN ISO 10077-2	≥ 0.37 Btu/hr.ft².°F



The Typologies

INWARD OPENING

ALL THE TYPOLOGIES CAN BE CONSTRUCTED WITH OUTWARD OPENING



elviql



WINDLOCH